

## Little princess' dress (1-2.5 years)





### Materials

Pure cotton (50g = 125m) 200g of white and 50g of pink color, crochet needle № 3,5; small amounts of a thinner yarn (50g = 300-400m) of pink and olive green color for the rosettes.

The dress is worked in rounds from top to bottom as a single piece.

### Top

Ch. 80, marking the 14<sup>th</sup>, 27<sup>th</sup>, 54<sup>th</sup>, and 67<sup>th</sup> st (this will be the corners for increases in the next rows). The first 13 rows are not joined into rounds to form the opening at the back.

1<sup>st</sup> row: ch 3, 1 dc into the 4<sup>th</sup> st from the hook, 1 dc into each st till the mark, 3 dc

together into the marked st. (move the mark into the 2<sup>nd</sup> of those 3 dc !) till the end (= 88 st.). Turn.

The next 11 rows are worked in the same way (= 176 st.)

13<sup>th</sup> row: 1 sc in each of the next 26 st., ch 20 (for the arm hole), skip 36 st., 1 sc in each of the next 52 st., ch 20, skip 36 st., 1 sc in each of the next 26 st., sl st into the first st to join the work into a round (= 144 st.).

### Skirt

To see how to make front-to-post (FP) crochet, see the video tutorial at <http://www.youtube.com/watch?v=yIu4HfUpvsY>. Unlike in the video, we need a FP treble dc (3 times yarn over!)

Explanations to the charts: dc and tr dc above the chains are worked into the chain and not into single stitches!

Note: The first *FP tr dc* in each round is replaced by the following : ch1, 1 FP sc, ch 3.

1<sup>st</sup> round: work according to Chart I starting with the 1<sup>st</sup> st of the pattern (the length of the pattern = 9 st, i.e., you should have the total of 16 patterns).

2<sup>nd</sup> to 6<sup>th</sup> rounds: according to Chart I placing the pattern exactly above each other.

7<sup>th</sup> round (increasing): ch 4 after the 1<sup>st</sup>, 3<sup>rd</sup>, 5<sup>th</sup>, 7<sup>th</sup>, 9<sup>th</sup>, 11<sup>th</sup>, 13<sup>th</sup> and 15<sup>th</sup> pattern (see row 7 of the chart).

8<sup>th</sup> round: work a pattern into each of the added ch-4 spaces (see row 8 of the chart). You should now have the total of 24 patterns.

Rounds 9 to 20: according to the row 2 of the chart.

Rounds 21 and 22: the edging in pink color, see Chart II.

### Ruffle between the top and the skirt

The 1<sup>st</sup> row is worked between the 13<sup>th</sup> row of the upper part and the 1<sup>st</sup> row of the skirt by



stitching into the front loops of the stitches of the 13<sup>th</sup> row (= 176 st). With pink color, work according to Chart III (start the row in the middle of the back placing the center of the shell into the center of the back for symmetry).

### Neck line

With pink color, work 1 sl st into each st of the neck opening; turn.

2<sup>nd</sup> row: \* 1 sc, ch 3, skip 1 st, \* repeat from \* to \* until the end of the row.

### Rosettes

8 pcs. of medium size for the skirt, 2 small and 1 large one for the top (medium and large size are specified in parentheses).

Chain 17 (35, 53).

1<sup>st</sup> row: 1 dc into the 5<sup>th</sup> st from the hook, \* ch 1, skip 1 st, (1 dc, ch 1, 1 dc) into the next st \*, repeat from \* to \* until end of the row, turn.

2<sup>nd</sup> row: ch 3, 5 dc into the 1<sup>st</sup> ch-1 space, \* 1 sc into the next ch-1 space, 6 dc into the next ch-1 space \*, repeat from \* to \* until the end of the row (= 6 (16, 25) petals).



Roll the stripe tightly into a rosette and sew together with a few stitches at the bottom.

### Leaves

8 pcs. of medium size (= 5 leaves) for the skirt, 2 small (= 3 leaves) and 1 large (= 6 leaves) for the top (medium and large size are specified in parentheses).

Chart IV shows the leaf pattern for each size.

1<sup>st</sup> row: ch 9 (15, 18) and join into a ring with a sl st.

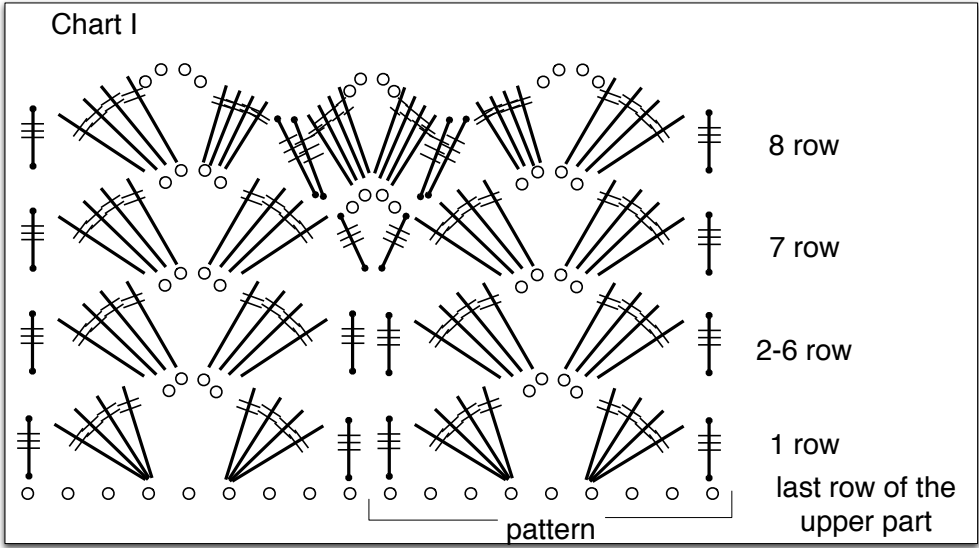
2<sup>nd</sup> row: (1 sc, ch 1) into each st (= 18 (30, 36) sts).

3<sup>rd</sup> and 4<sup>th</sup> row: according to the chart (= 3 (5, 6) leaves).

Attach the rosettes to the leaves and then to the dress (see photo).

### Cord

Ch 180 and work a row of sl st. Pull the cord along the opening at the back of the top (see photo).



○	ch st
●	sl st
⌈	FP tr dc
⌋	tr dc
+	dc
+	hdc
	sc

